

# Exterior Selections



Extra DeVilbiss Glassware Openings (optional)

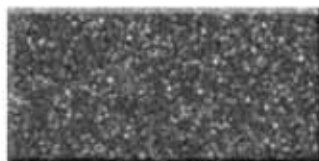


3" Extension Legs (optional)



Locking Casters (optional)

## Work Surfaces



Raven Mirage (standard)



Khaki Brown Tempest (standard on beige Alucobond only)

## Exterior Colors



Alucobond Beige



Alucobond Silver



Stainless Steel



Graphite Nebula Laminate



White Nebula Laminate



English Oak Laminate



Golden Oak Laminate



Sanibel Maple Laminate

## Specifications

	Stainless Steel or Laminate				Laminate Mini Cabinet	Alucobond			
	Standard	Tall	Deluxe	Tall Deluxe		Standard	Deluxe	Tall	Tall Deluxe
Overall Height (in.) w/ casters (without)	48.5 (46.0)	59.5 (57.0)	48.5 (46.0)	59.5 (57.0)	48.5 (46.0)	38.25 (35.75)	38.25 (35.75)	49.25 (46.75)	49.25 (46.75)
Work Height (in.) w/ casters (without)	33.0 (30.5)	43.75 (41.25)	33.0 (30.5)	43.75 (41.25)	32.5 (29.5)	32.75 (30.27)	32.75 (30.25)	43.5 (41.0)	43.5 (41.0)
Width (in.) w/ corded Otoscopes (without)	27.75 (24.5)	27.75 (24.5)	37.75 (34.25)	37.75 (34.25)	N/A (24.5)	31.25 (29.0)	40.0 (38.0)	31.25 (29.0)	40.0 (38.0)
Depth (in.) w/ glove dispenser (without)	20.25 (17.25)	20.25 (17.25)	20.25 (17.25)	20.25 (17.27)	N/A (17.25)	22.0 (19.0)	22.0 (19.0)	22.0 (19.0)	22.0 (19.0)
Drawers (qty.@height - in.)	2@5.625 2@3.125 1@4.125	2@5.625 4@3.125 2@4.125	2@5.625 2@3.125 1@4.125	2@5.625 4@3.125 2@4.125	3@5.313	2@5.438 2@2.970 1@4.406	2@5.438 2@2.970 1@4.406	2@5.438 4@2.970 2@4.406	2@5.438 4@2.970 2@4.406
Vacuum	27"	27"	27"	27"	27"	27"	27"	27"	27"
Pressure	60 psi	60 psi	60 psi	60 psi	60 psi	60 psi	60psi	60psi	60psi
Electrical	ETL/CSA* Listed 110/220V	ETL/CSA* Listed 110/220V	ETL/CSA* Listed 110/220V	ETL/CSA* Listed 110/220V	ETL/CSA* Listed 110/220V	ETL/CSA* Listed 110/220V	ETL/CSA* Listed 110/220V	ETL/CSA* Listed 110/220V	ETL/CSA* Listed 110/220V
Shipping weight (lbs)	200	245	245	290	180	200	200	245	290

\*Conforms to UL Std. 60601-1 Medical Equipment CAN/CSA - C22.2 No. 601.1- M90 (Pending)